

Castelo | Smart Home App

Haley King

Project Definitions

Smart home applications are meant to give users control of their home security and settings from a mobile application. Some common features include:

- Control temperature, lights, A/C, locks, security cameras and more
- Set timers for all those functions
- Monitor current and past activity

[2-1]

Competitors



EcoBee3

- Smart temperature app
- Many different scheduling options



Nest

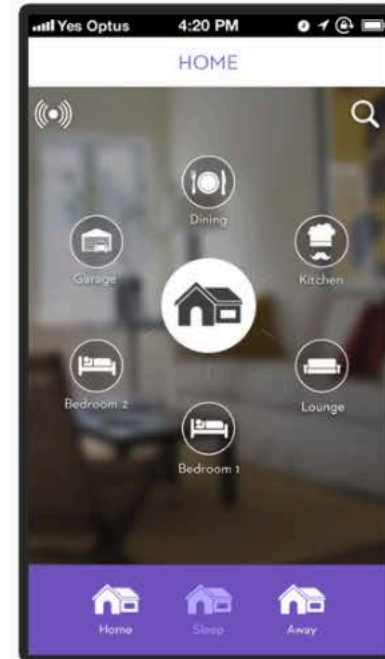
- Live camera, access to changing temperature and locks
- Tells air quality and weather

[2-2]



SmartThings

- Locks, temperature, and lights
- Color coded to tell what's on, off, etc.

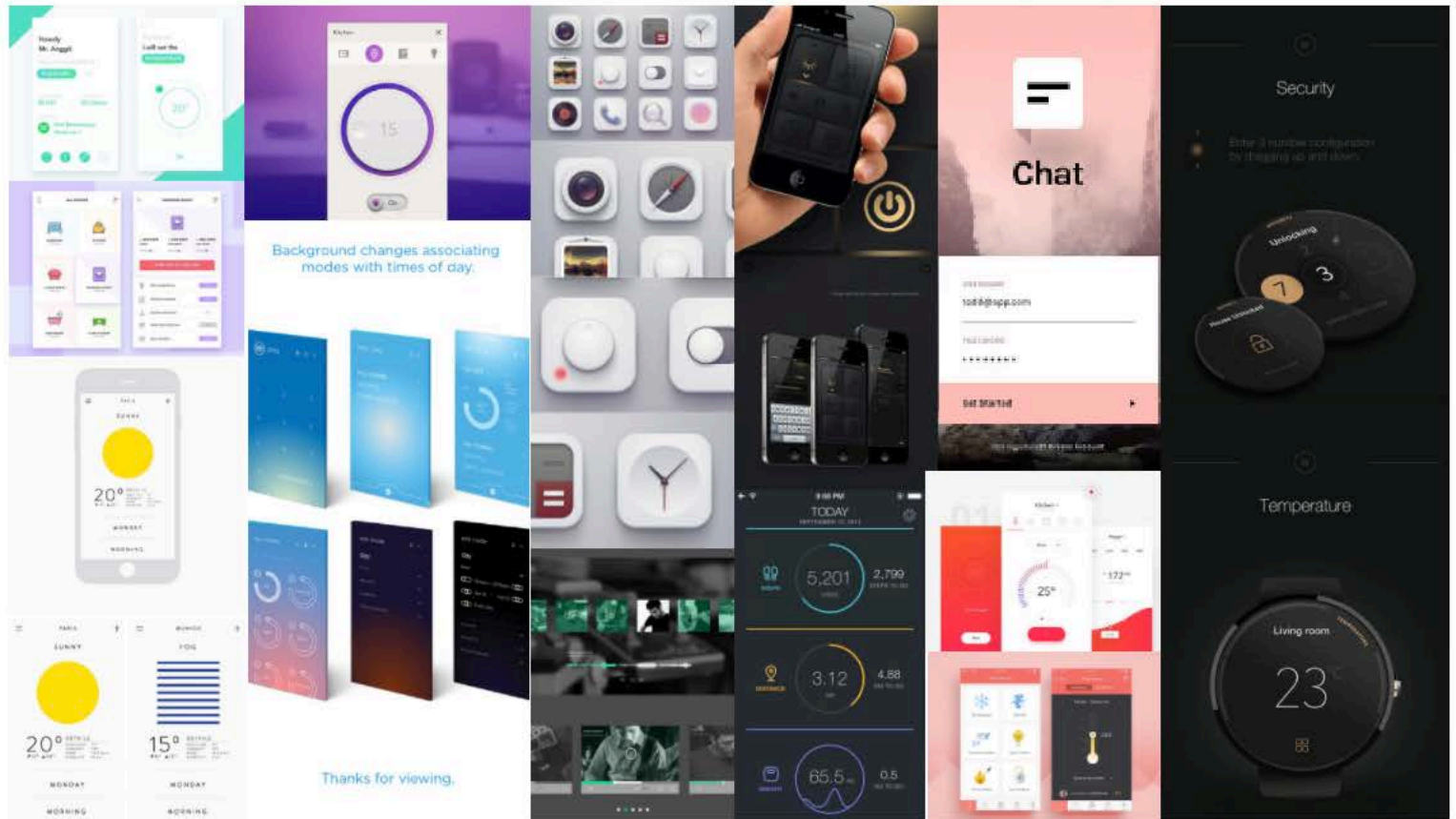


Ninja Blocks

- Gesture and app controls
- Lighting and temperature

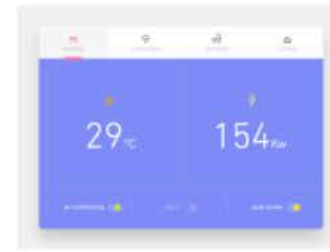
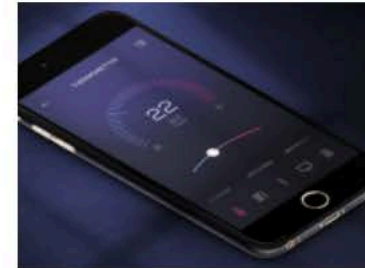
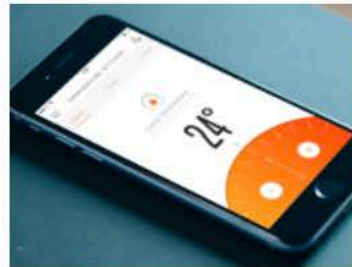
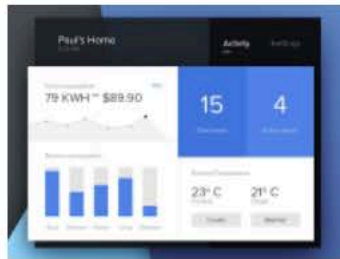
[3-1]

App Inspiration



[3-2]

Inspiration



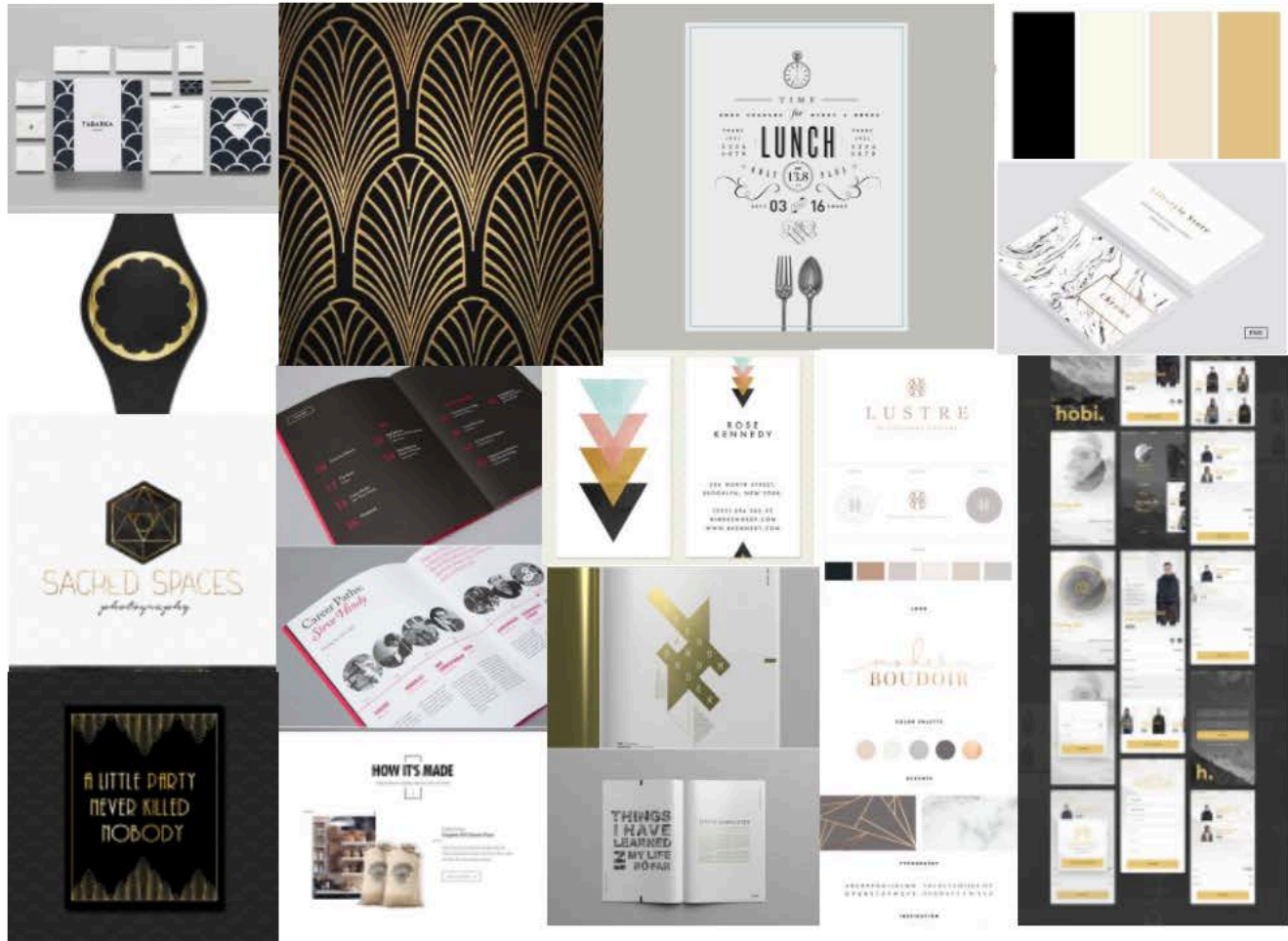
What works:

- Mimicking the feeling of flipping switches or turning a dial, like a real house
- Minimalist vibes, keep things simple and refined
- Monitoring screens to give you quick updates on current setting and past history
- Using color to signify setting (on, off, standby, etc.)
- Repeat settings by time, date, etc.

[4]

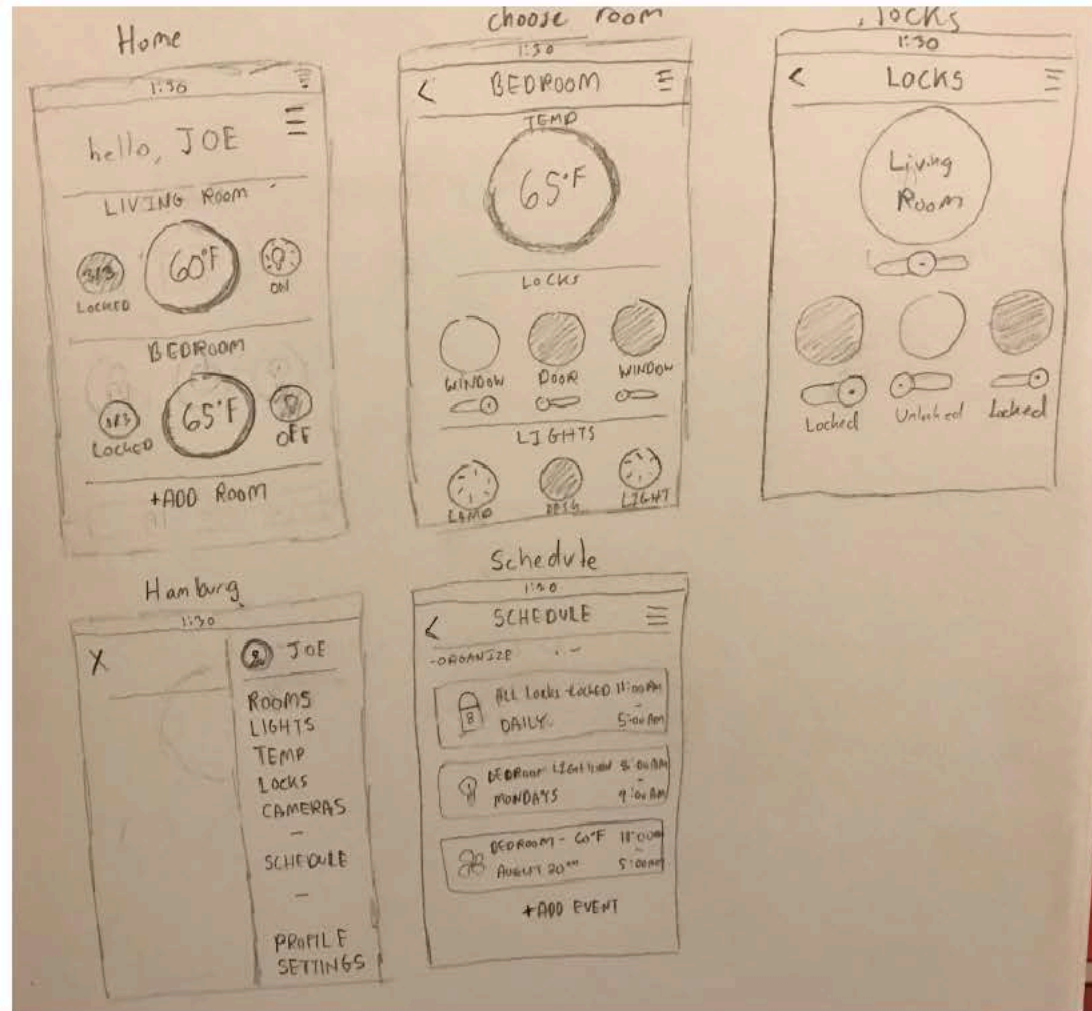
Moodboard

Black, gold, elegant, simple, clean



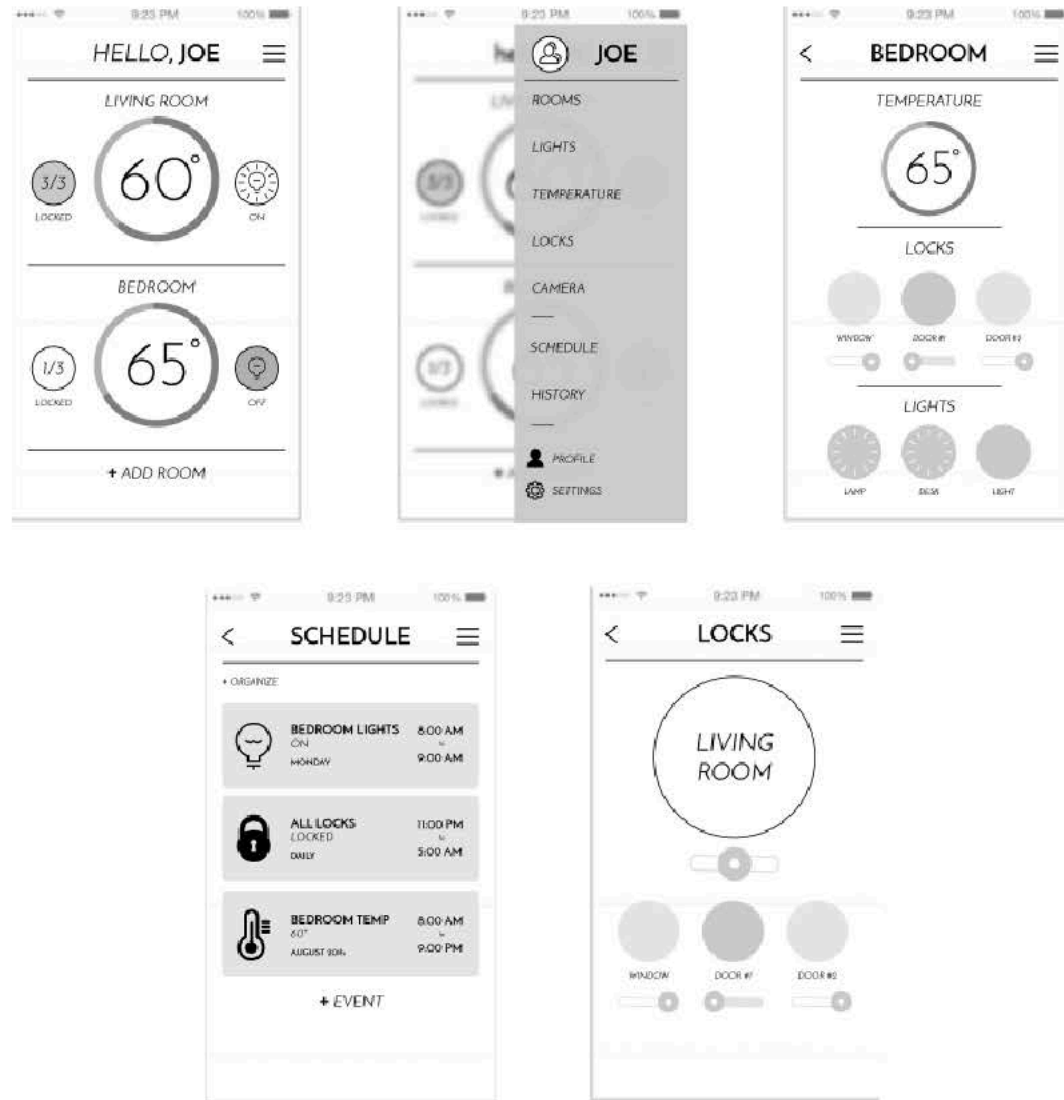
[5]

Sketches

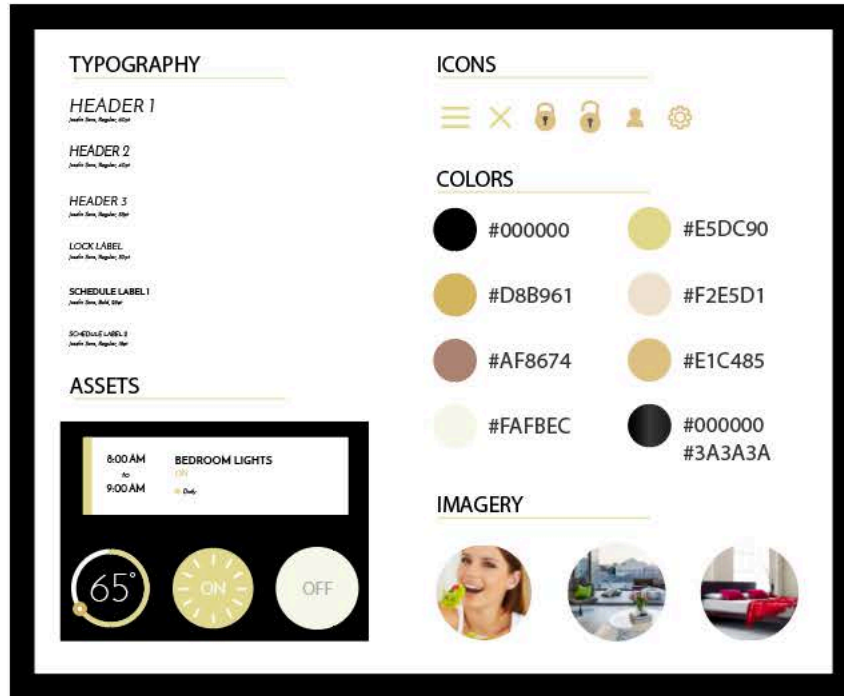


[6]

Wireframes



styleboard



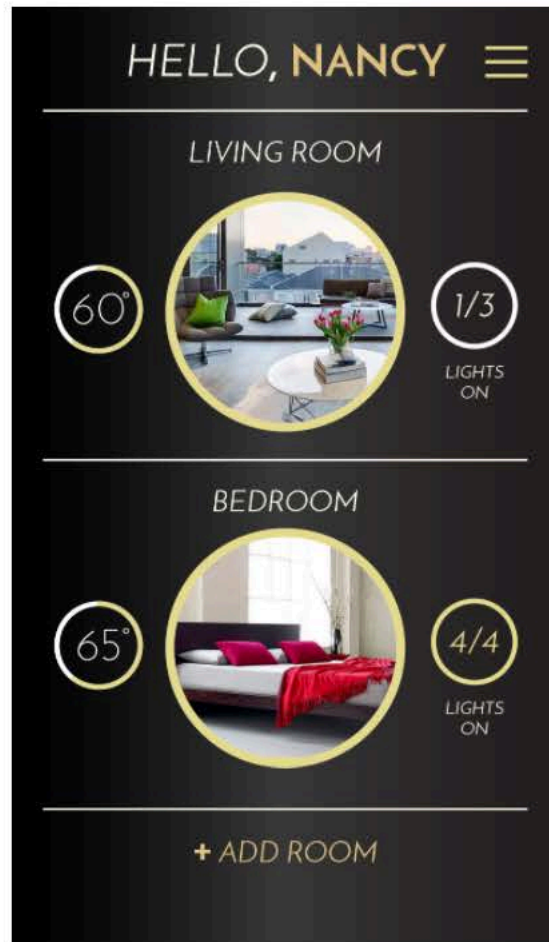
"For a man's house is his castle, et domus sua cuique est tutissimum refugium [and each man's home is his safest refuge]."

-Edward Coke

castle - castel - castelo

[8-1]

Final Visual Design

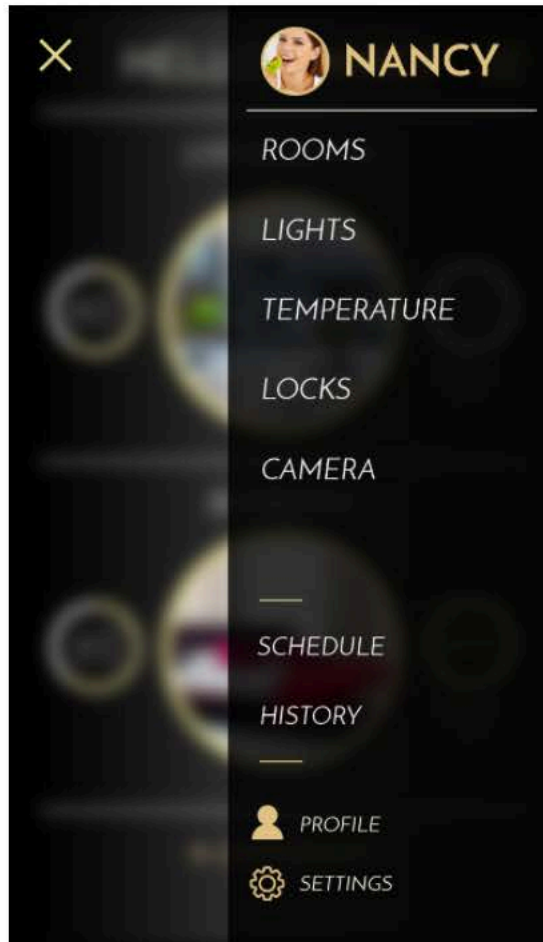


Home Screen

Greets the user and gives an overview of the current settings for each major room registered through the app. Provides live camera feed, temperature, and number of lights on for each room. Rooms can be edited by being tapped on.

[8-2]

Final Visual Design

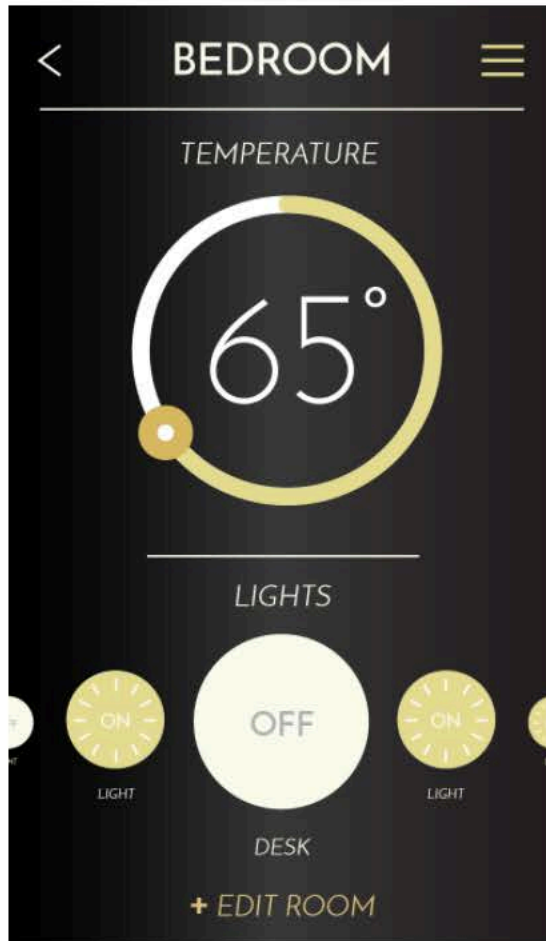


Side Navigation

Side navigation present on every screen via a hamburger icon. Shows all major sections of the application from changing settings immediately, scheduling future events, and accessing user profiles.

[8-3]

Final Visual Design

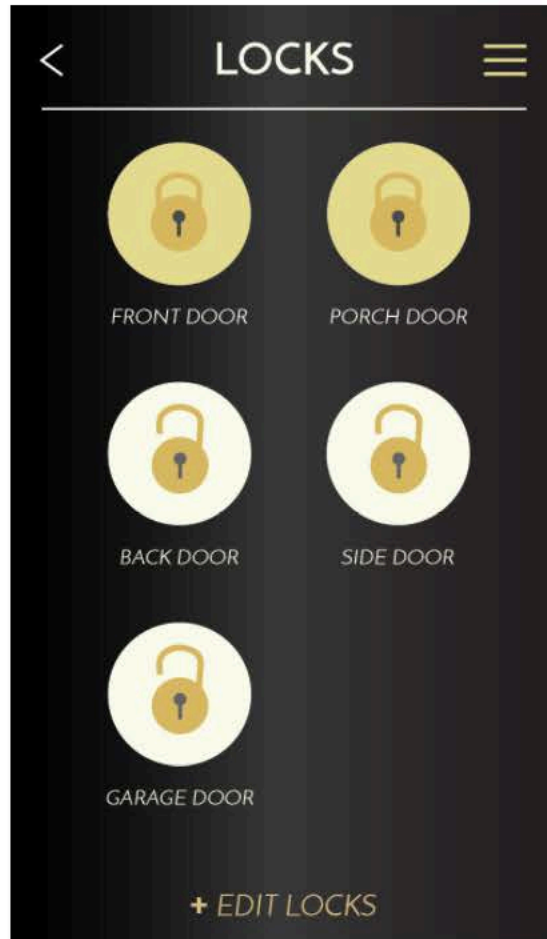


Room Settings

Change and view information on a specific room. Lights may be turned off, on, and dimmed and temperature may be set.

[8-4]

Final Visual Design



Locks

Control all of the smart locks within your home in one space. Locks can be added and removed as well.

[8-5]

Final Visual Design



Scheduling

Schedule one-time or reoccurring events for the smart devices within your home.

Organized by date, events can be edited or added from this screen.

Thank you!